



# IOT & TELEMATICS SOLUTIONS















# FIOS | FLEET MANAGEMENT

FiOS

The powerful, flexible, and low-cost fleet management platform designed to control all types of vehicles and stationary objects. Embrace 300+ monitoring parameters and enhance fleets with:

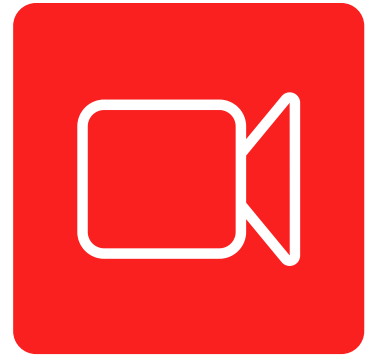
-  Real-time tracking
-  Fuel management
-  Video monitoring
-  Route optimization
-  All types of maps
-  Driver behavior monitoring
-  Fleet performance analytics
-  Maintenance management
-  E-fences & area-based tracking
-  Alerts and notifications

**kloudip**  
telematics.com



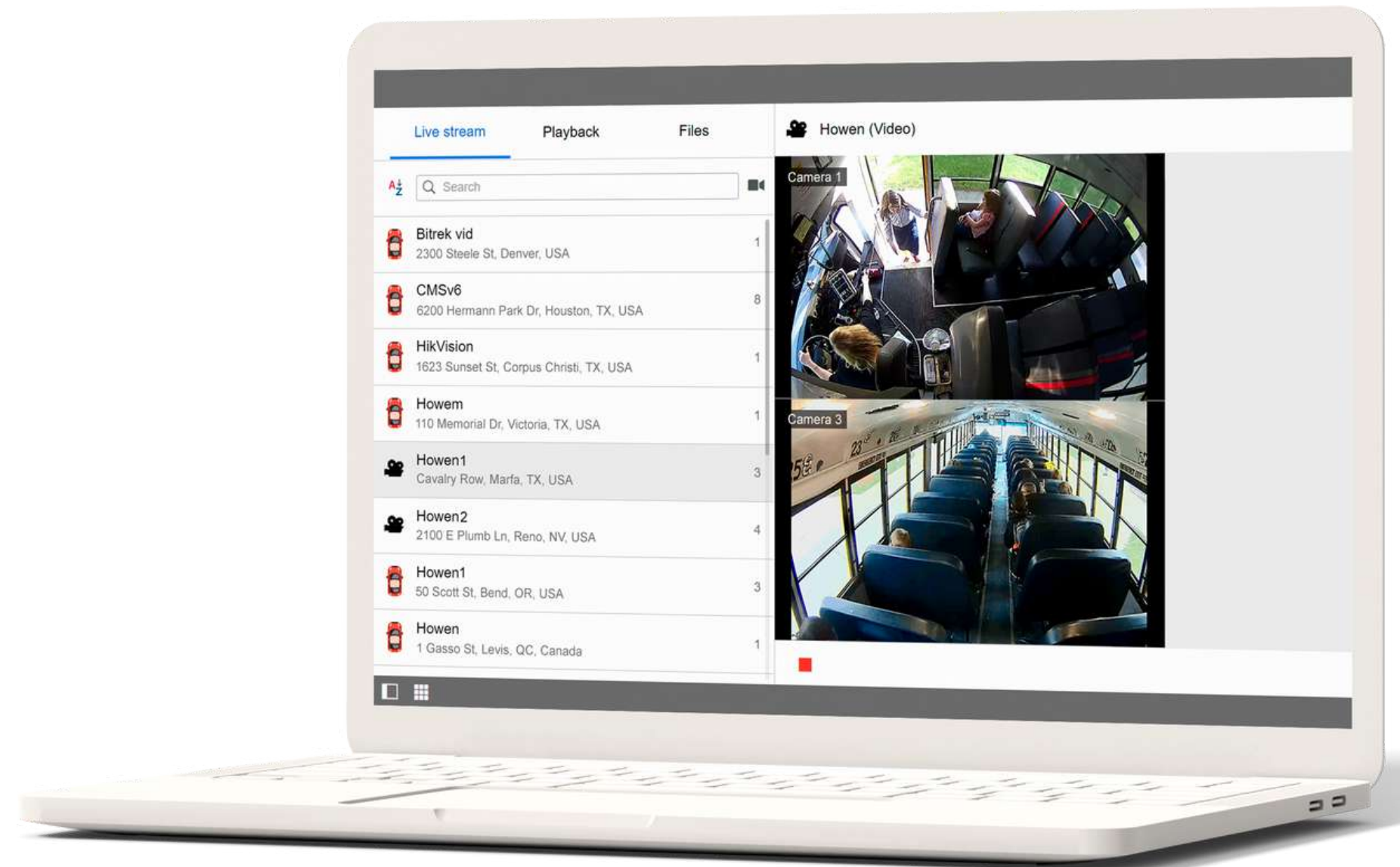
# VIDEO

# REAL-TIME & EVENT-BASED VIDEO MONITORING

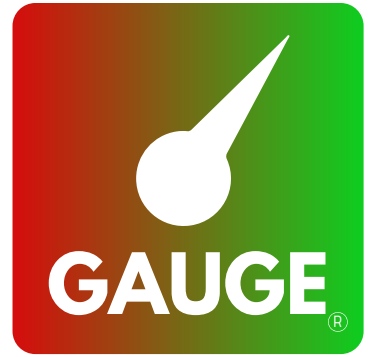


Watch transport and drivers through cameras, including CCTV, MDVR, and ADAS:

- Employ advanced driver assistance systems to prevent traffic accidents;
- Install fixed cameras to watch cargo, trailers, and cabins, and detect thefts;
- Configure event-based video monitoring to minimize data consumption;
- Connect MDVRs to provide evidence in disputable traffic accidents.



# GAUGE | FUEL CARD MISUSE DETECTION

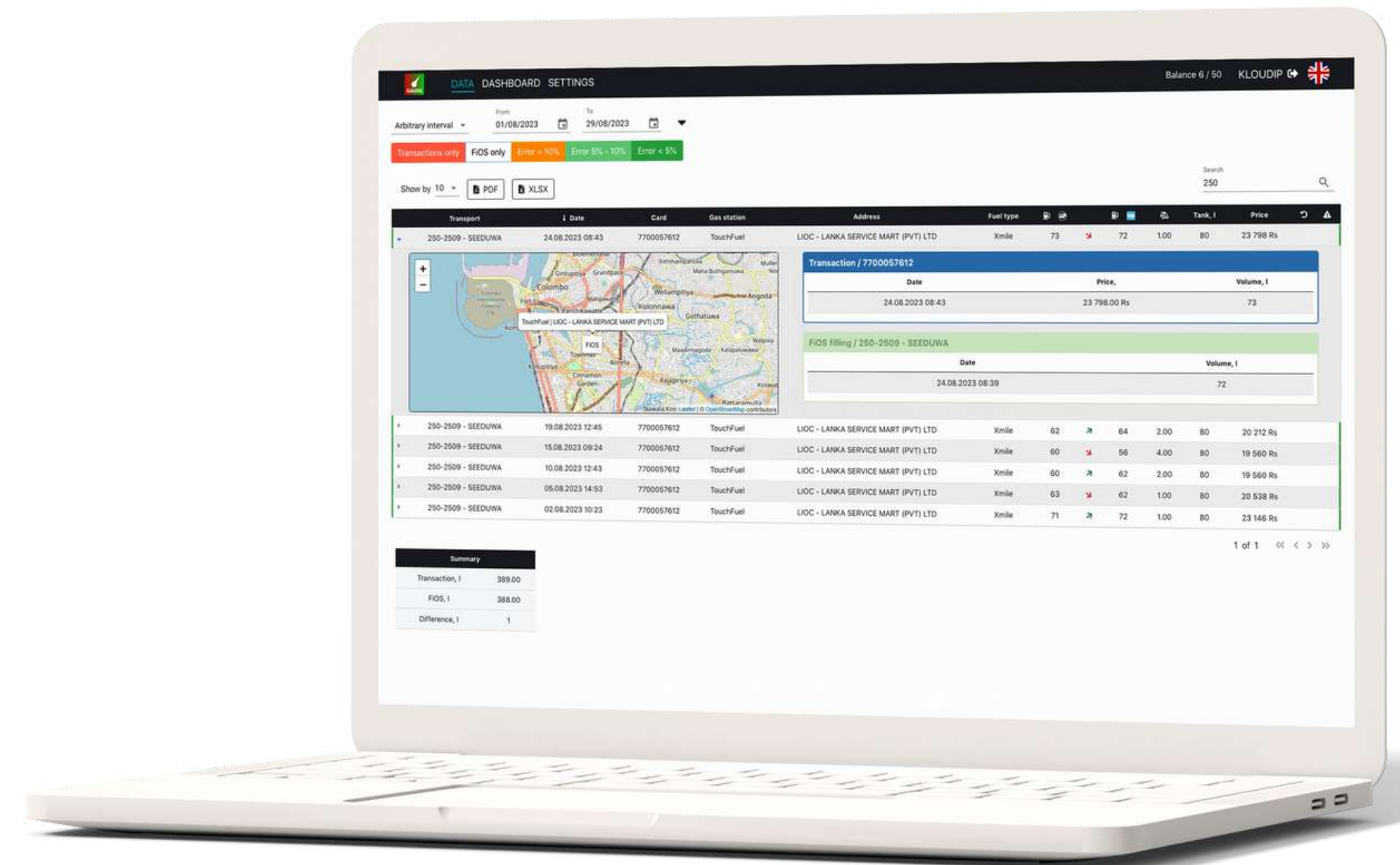


GAUGE helps to prevent fuel thefts owing to fuel card misuse or fraud.

The app receives comprehensive data on fuel fillings from two sources – your fuel card system and fuel level sensors installed in vehicles. The data includes:

- The volume of fuel filling and price;
- The vehicle location and petrol station address;
- The date and time.

GAUGE automatically cross-checks the data to detect inconsistencies and, as a result, fuel thefts.





# HAZER | SENSOR MONITORING



HAZER Premium is a universal IoT platform designed to monitor & manage vehicles, cargo, and buildings remotely via sensors. It offers a powerful IoT feature set to digitalize your assets and business:

- Sensor monitoring dashboards;
- IoT data visualization and analytics;
- Instant notifications via the app, SMS, email, or messengers;
- Smart rules to automatically manage sensors based on pre-set scenarios;
- In-building and outdoor location tracking;
- Quick data sharing with customers and colleagues;
- Multiple levels of visibility and administration.

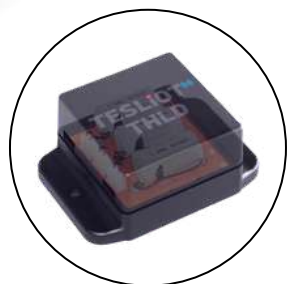


# HAZER | SENSOR MONITORING



HAZER Specific solutions come out-of-the-box, each comprising the best devices and feature sets selected for particular business tasks, e.g.:

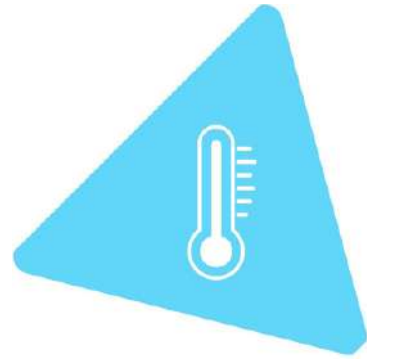
- Environment monitoring
- Machine hour control
- Vehicle fuel tracking
- Stationary fuel tank monitoring
- Energy management
- Basic fleet management
- Water tank monitoring
- Power generator monitoring





# ENVIRONMENT

## HAZER SPECIFIC

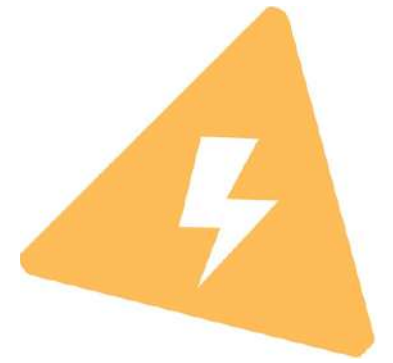


Remotely track and manage the temperature, humidity, water leaks, gas, CO2, and pressure in vehicles, buildings, containers, or trailers. Control temperature via IoT dashboards, generate custom reports, and more:

- Share storage and transportation data with clients or colleagues;
- Manage climate systems remotely on a smartphone;
- Deliver goods unspoiled;
- Prove compliance with safety standards.



# ENERGY | HAZER SPECIFIC



Electricity is one of the most expensive resources for a business, and now you can control it:

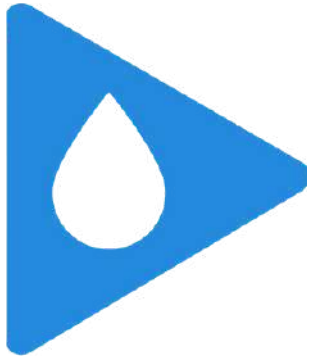
- Analyze energy consumption on charts and graphs;
- Watch your electricity bill updated in real time;
- Detect phase imbalances, when and where maximum demand is hit, and which appliances are consuming the most;
- Manage appliances on your smartphone via sensors;
- Receive alerts when reaching thresh-hold levels and more.

On average, our customers spend 20% less on electricity after introducing KLOUD Energy. Let us show you how.



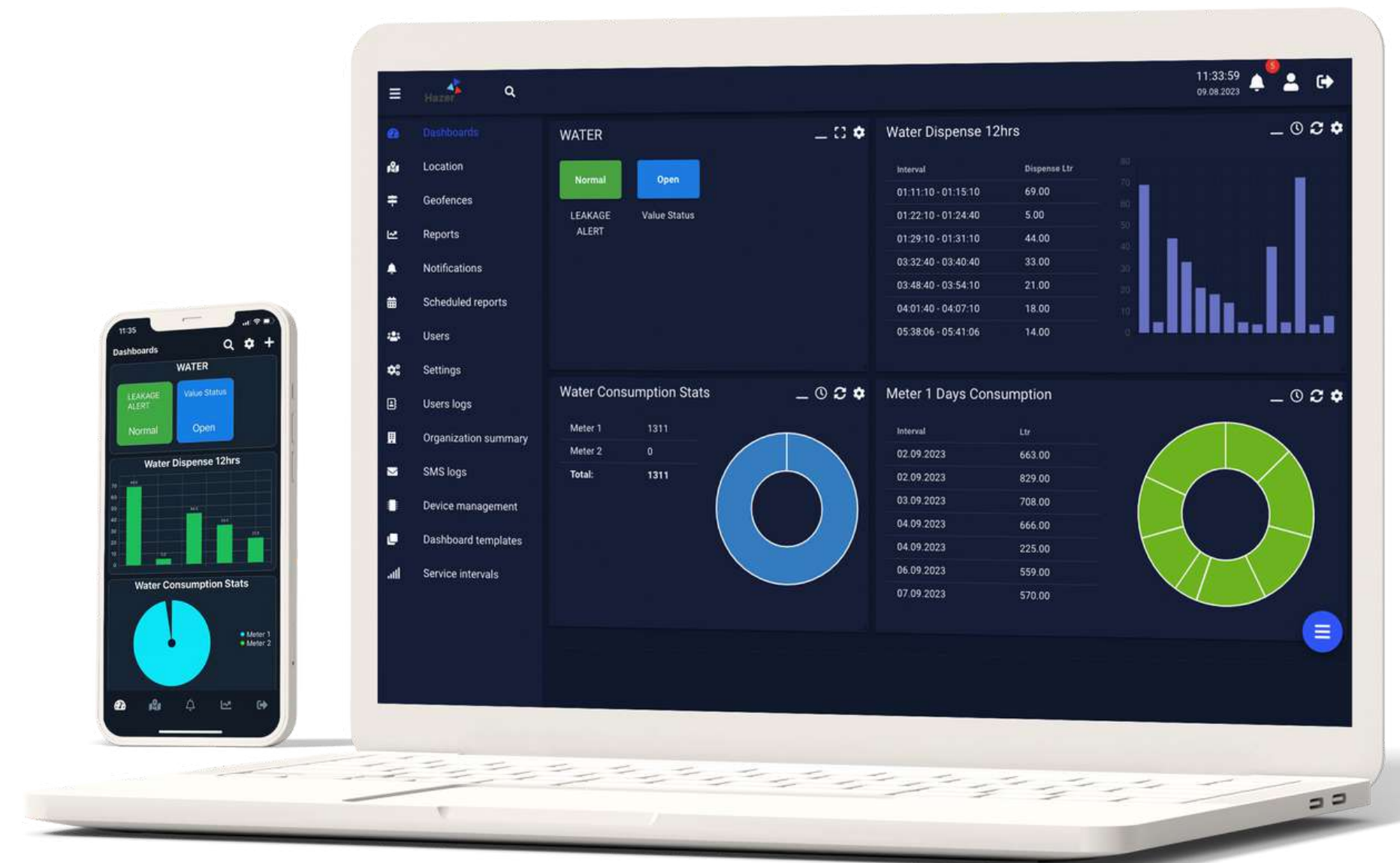


# WATER | HAZER SPECIFIC



Monitor water consumption in houses, factories, warehouses, and any other facilities on the go. HAZER collects data from any residential or industrial water meters on the market and displays the data on your laptop or smartphone, allowing you to:

- Track water consumption across your facilities in real time;
- Analyze hourly, daily, or monthly water demand and costs in reports;
- Compare hourly, daily, or monthly consumption over different periods on Insight Dashboards.
- Stay informed about leaks via email, SMS, or push alerts.



# GOFER

# CORPORATE TRANSPORT MANAGEMENT



GOFER platform is designed to organize the corporate passenger transport process and move employees to destinations economically, swiftly, & in an organized fashion. The platform offers the best Uber-like features and much more:

- Quick vehicle requests from a laptop or smartphone;
- Automatic and accurate driver payment calculations;
- Pre-programmable levels of vehicle visibility;
- Car sharing options;
- Transportation budget management;
- Vehicle request and usage analytics;
- Driver mobile app to accept/reject orders, rate passengers, track earnings, and view routes to destinations.





# EPORT | 1-5PL DELIVERY ECOSYSTEM



EPORT is a 1-5PL delivery ecosystem where cargo owners, fleet suppliers, logistics operators, and drivers cooperate to transport goods.

The platform makes the process paperless, low-cost, and manageable at every stage and for all parties. EPORT features:

- Transport and driver database to find the best suited vehicles and professionals for deliveries;
- Quick order placement and tracking for cargo owners;
- Precise trip management and KPI dashboards for logistics service providers;
- Billing matrix to automatically generate billing docs and details;
- The mobile app for drivers for seamless interaction with the office.



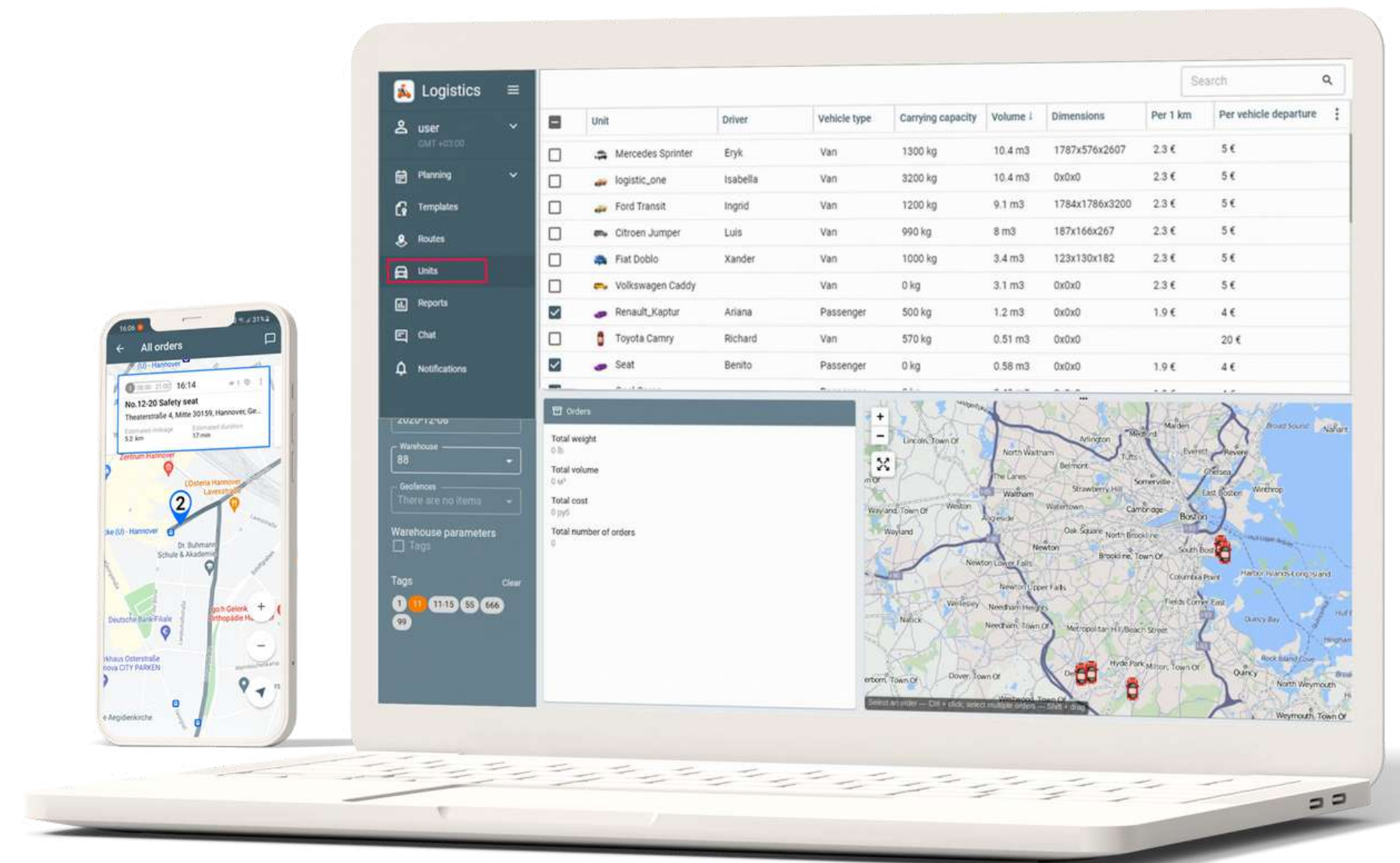
# DISTRIBUTION

# DELIVERY CONTROL



The DISTRIBUTION platform ensures effective order management and delivery process monitoring. It comprises a web interface for dispatchers and a mobile app for the delivery staff.

The application optimizes cargo delivery, suggests ideal delivery routes, ensures capacity planning based on weight/space, sends delivery alerts, and offers instant proof of delivery.





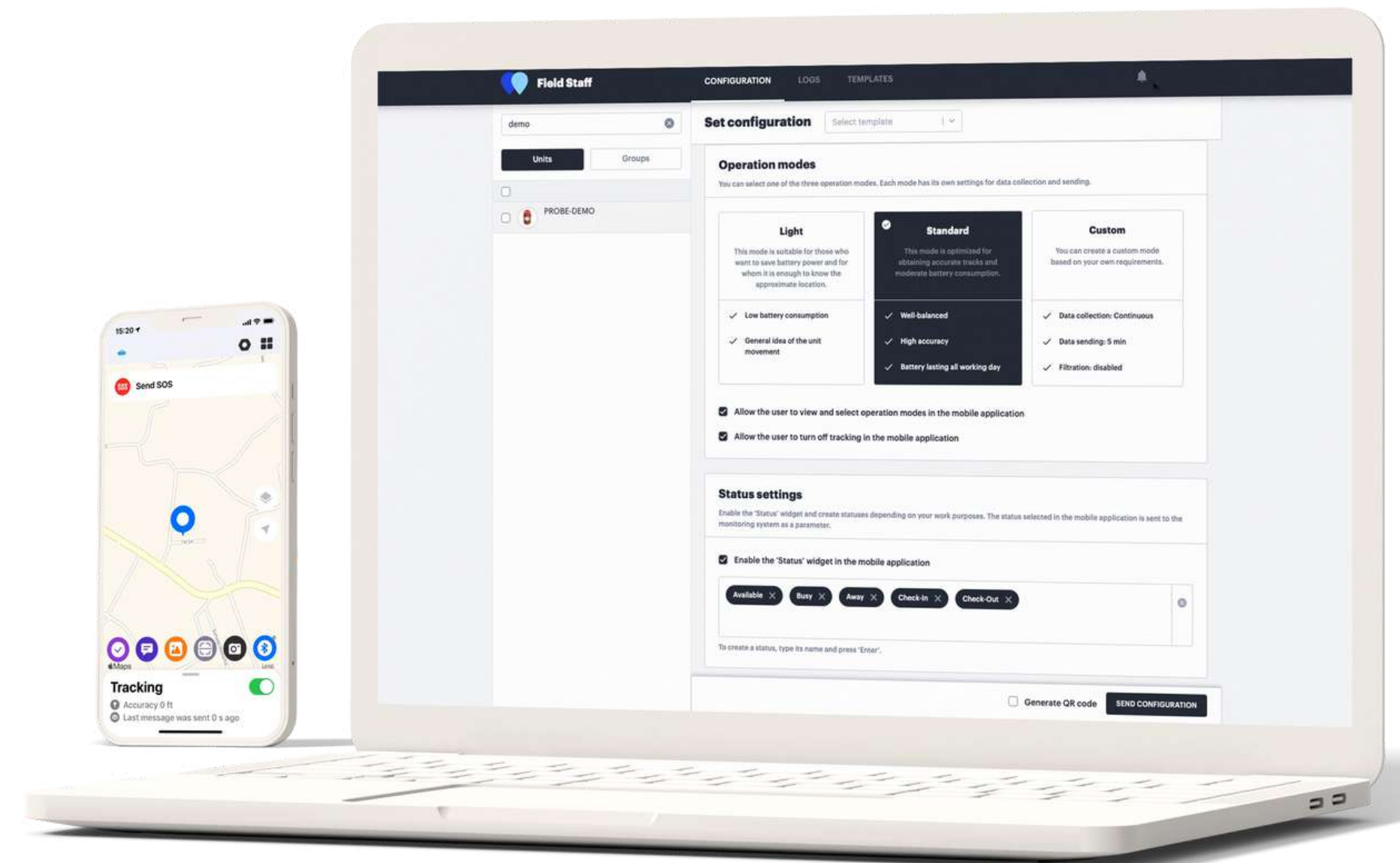
# PROBE | TURNS A SMARTPHONE INTO A TRACKER

PROBE

PROBE mobile application turns a smartphone into an accurate GPS tracker, so you can:

- Use employees' smartphones to track movements;
- Trace interactions between colleagues;
- Analyze staff performance and availability through activity statuses;
- Send notifications and alerts to the employees' smartphones;
- Receive SOS messages and photos from workers
- Find stolen mobile devices via GPS.

Whether have sales staff visiting clients or service teams travelling to remote locations, PROBE allows taking them under control remotely.



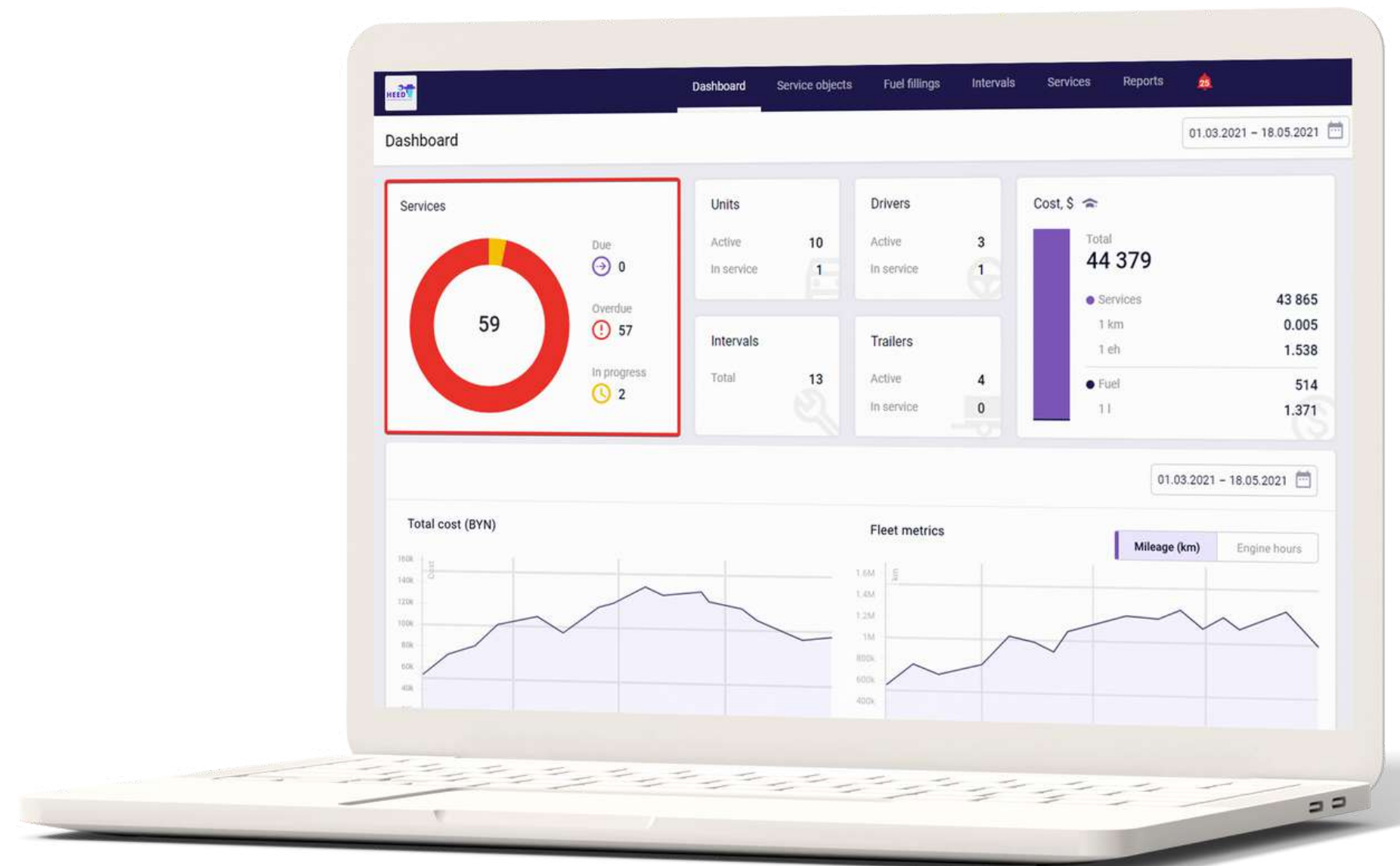
# HEED | MAINTENANCE MANAGEMENT



HEED is a remote maintenance management app designed to plan, manage, and control service works & costs, including:

- Preventive maintenance to discover potential breakdowns before they become critical issues.
- Repairs to stay updated on the works, spare parts, and costs.
- All types of vehicle services, like a car wash, routine inspection, or other minor activities that take time and make vehicles idle.

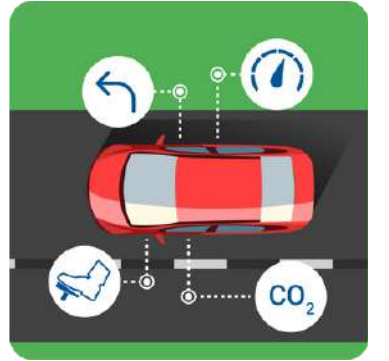
HEED shows how much it costs to keep fleets operational and reveals the time your vehicles spend at service stations, where they bring zero value to the business.





# CIRCUMSPECTOR

## SAFE TRIPS

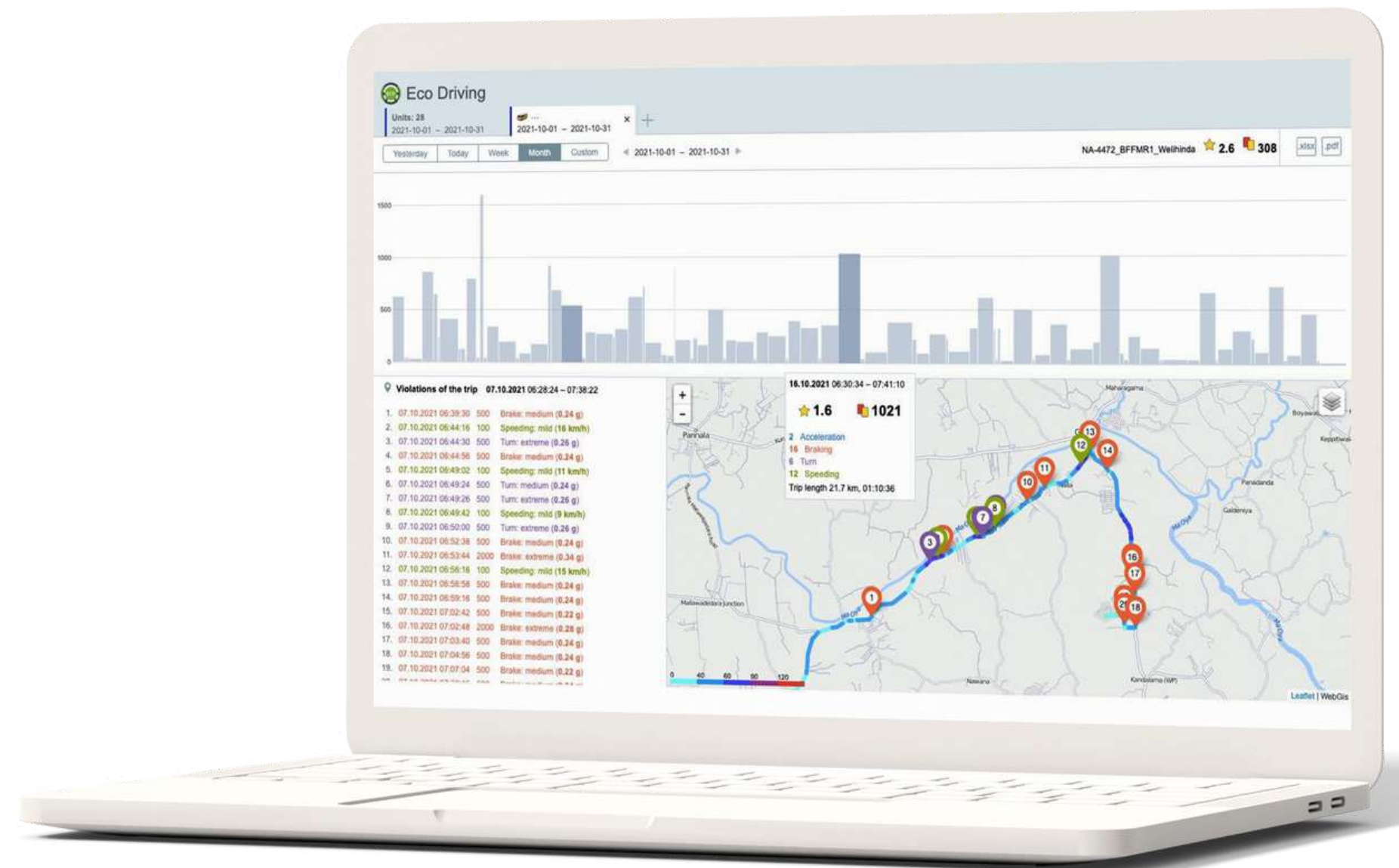


CIRCUMSPECTOR is a driver behavior monitoring application designed for driving quality assessment based on a set of criteria, including:

- Speedings and accelerations;
- Harsh braking and sharp turns;
- Reckless driving;
- Any custom criteria that you consider a violation.

Rank drivers by their skills, penalize or reward, analyze accidents, and create personalized training programs for each driver in your fleet.

CIRCUMSPECTOR implementation results include prolonged vehicle life, reduced fuel consumption, and passenger & cargo safety.



# EGIS | SMART GPS LOCKS



EGIS is constantly connected to the FiOS fleet management platform, recording cargo movements and preventing unauthorized access to cargo. Here are just a few security options

EGIS notifies cargo owners and transporters of unauthorized access, tampering, or other events via email, in-app alerts, or SMS.

Authorized personnel can unlock it remotely via FiOS web interface, mobile app, or NFC card.

Users can set up custom lock release conditions. For example, the driver can release the lock only when he reaches the authorized premises.





# REVIEWS

# INTERNATIONAL PARTNERS & CLIENTS

SPAIN



There are thousands of fleet management companies globally, but there is a small group highlighted over them. KLOUDIP is one of such companies. After years of hard work they positioned their brand as one of the most serious, skilled, & confident companies to work with.

[!\[\]\(d66ff64371a51729ac8c1cdaa685ba6f\_img.jpg\) Pablo Guillem](#), Localizador Sherlog S.L.

AUSTRALIA



We have known KLOUDIP for several years and partnered both professionally & personally. It's a great team of industry experts and developers, being at the forefront of the industry as the "go-to" solutions provider, offering much more than just track & trace.

[!\[\]\(faf942dc3e59ce8eb64b4ac481eca7e0\_img.jpg\) Alan Klein](#), FleetPursuit

GERMANY



KLOUDIP has a great team of software and hardware developers and is always on the road to "being a solution provider" besides the track & trace business.

[!\[\]\(95b425611cbd2b8716a140cf67c81822\_img.jpg\) Wolfgang Busch](#), Hilltronic GmbH

GREAT BRITAIN



We needed bespoke development and there was only one company we looked to – KLOUDIP – a leading IoT and telematics solution developer worldwide.

[!\[\]\(56549452e01ca28bdf2500ced9653143\_img.jpg\) Lindsay Fisher](#), Trac360 Ltd.

# @KLOUDIP



INFO@KLOUDIP.COM



## KLOUDIP INC

3 Germay Dr, Unit 4 #4725  
Wilmington, DE 19804, USA  
Phone: +1-201-448-8116

## KLOUDIP (Pvt) Limited

Plot 334, Suite#B6, Rafiu  
Babatunde Tinubu Road,  
Amuwo Odofin, Lagos, Nigeria.

## KLOUDIP GmbH

Theo-Geisel-Strasse 12 Usingen,  
Hessen (DE) 61250, Germany  
Phone: +49 69 8088 4516

## KLOUDIP (Pvt) Ltd

No.1/8, 1st Lane, Bandaranayaka  
Avenue, Panadura 12500, Sri Lanka  
Phone: +94-11-212-7040

